



FALCON 115 | 35m | 2007



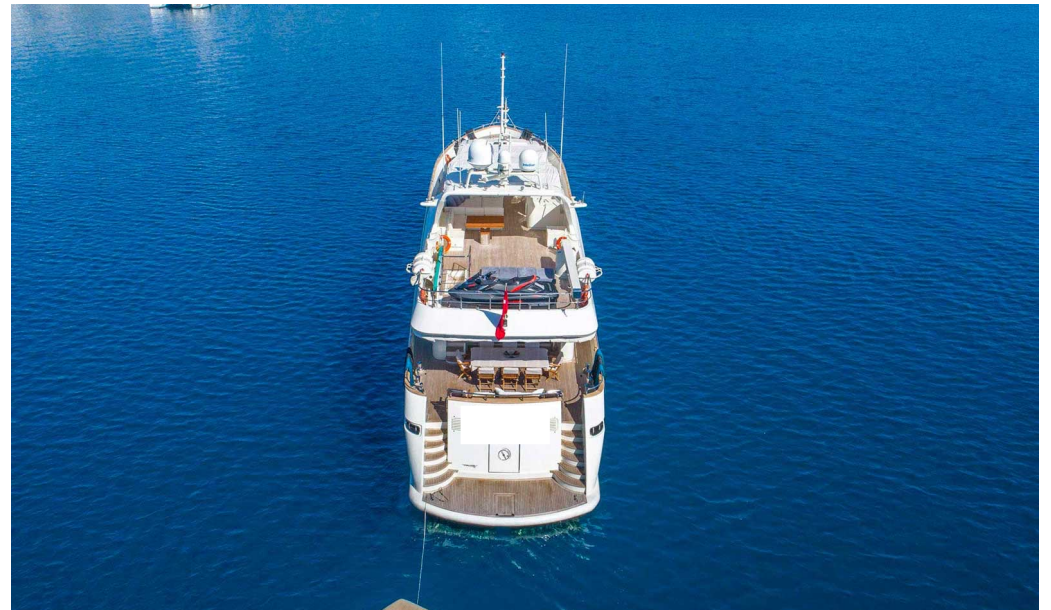
FALCON 115 – 35M

Length	35m	Maximum Speed	28 Knots
Year of Build	2007	Cruising Speed	16 Knots

Guests: 10 | Cabins: 5 | Crew: 5



FALCON 115 | 35m | 2007



EXTERIOR



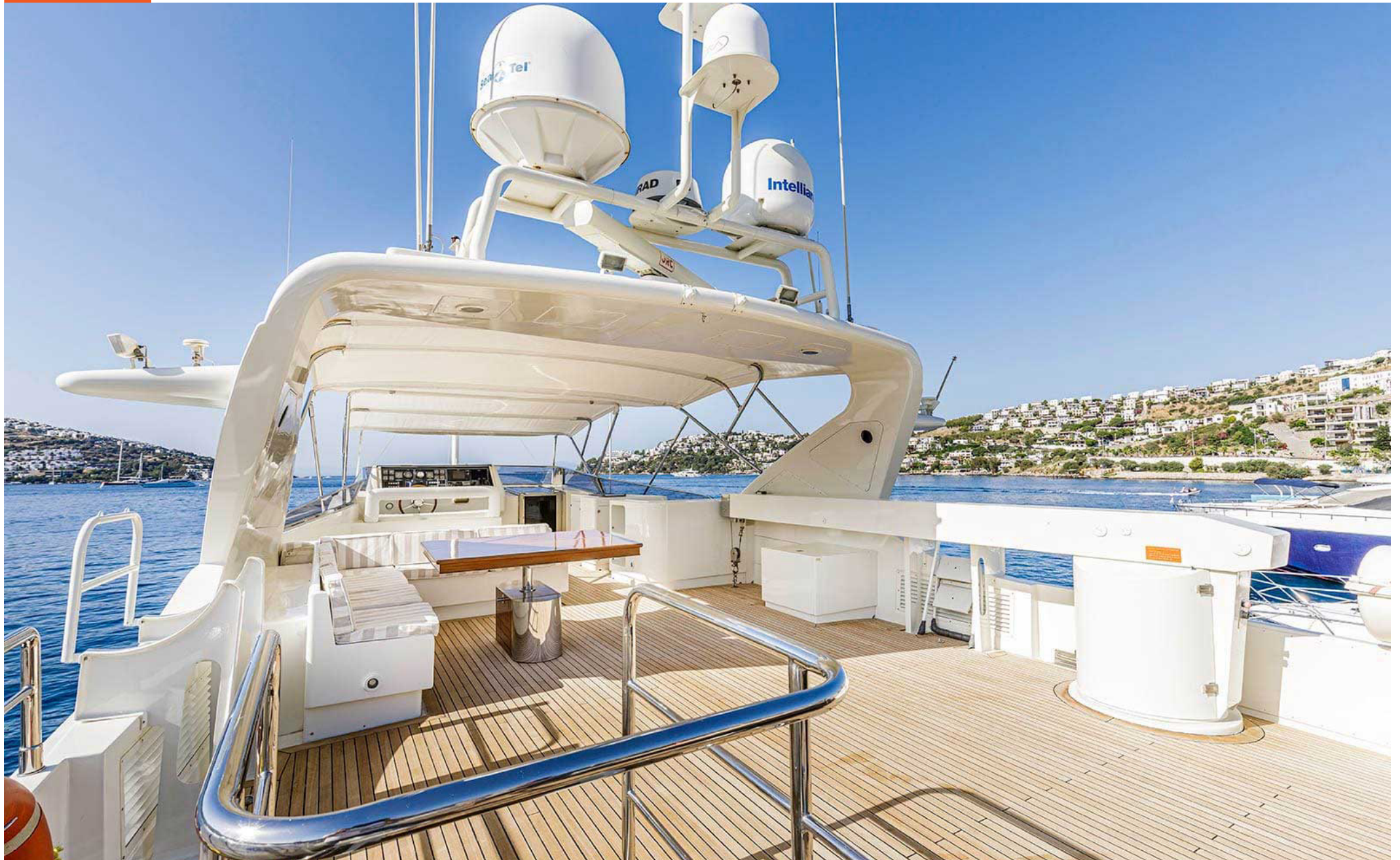
FALCON 115 | 35m | 2007

EXTERIOR



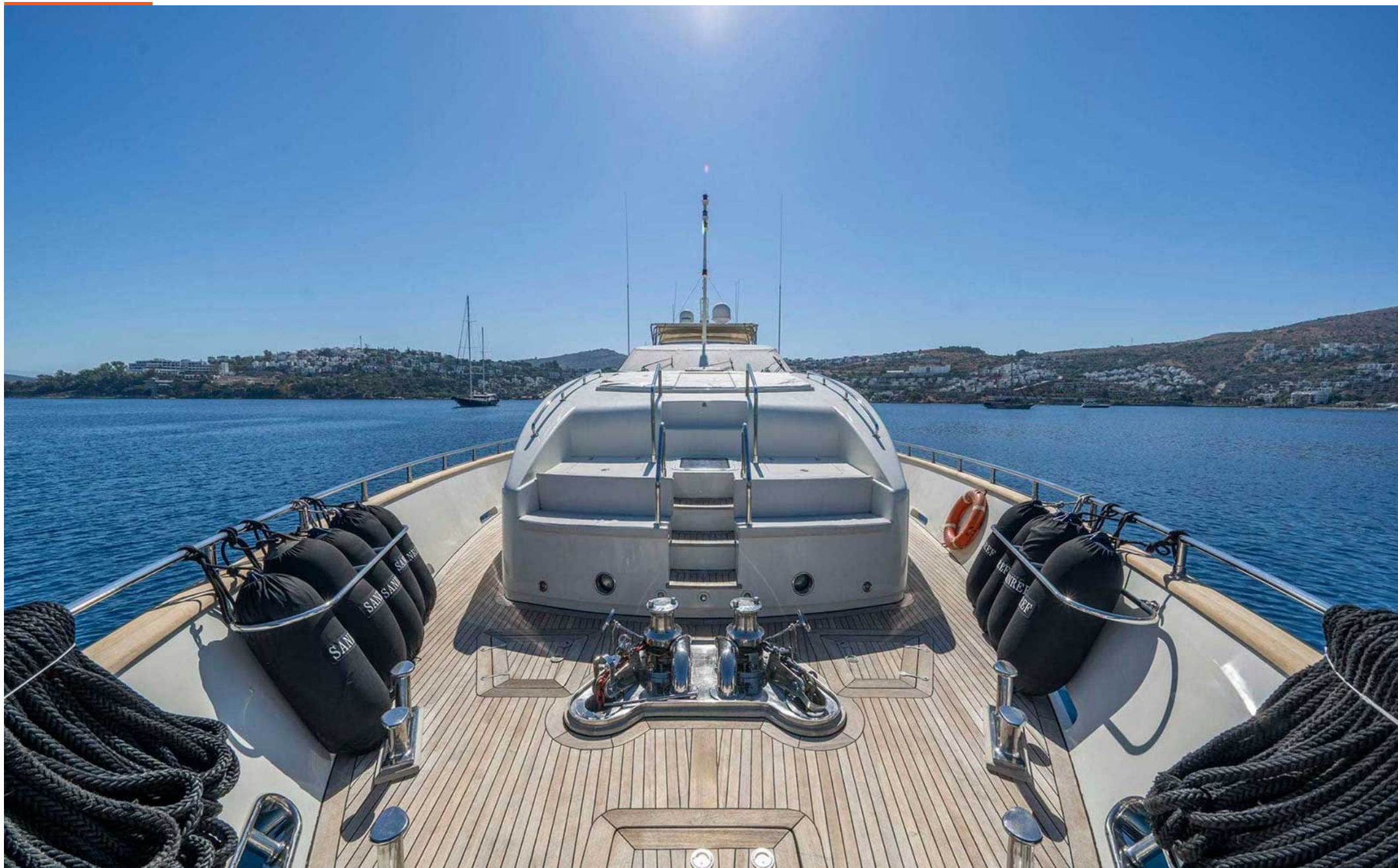
FALCON 115 | 35m | 2007

FLYBRIDGE



FALCON 115 | 35m | 2007

FLYBRIDGE



FALCON 115 | 35m | 2007

EXTERIOR



FALCON 115 | 35m | 2007

EXTERIOR



FALCON 115 | 35m | 2007

FYLBRIDGE



FALCON 115 | 35m | 2007

FYLBRIDGE



FALCON 115 | 35m | 2007

EXTERIOR



FALCON 115 | 35m | 2007

INTERIOR



FALCON 115 | 35m | 2007

INTERIOR



FALCON 115 | 35m | 2007

INTERIOR



FALCON 115 | 35m | 2007

KITCHEN



FALCON 115 | 35m | 2007

CABINS



FALCON 115 | 35m | 2007

CABINS



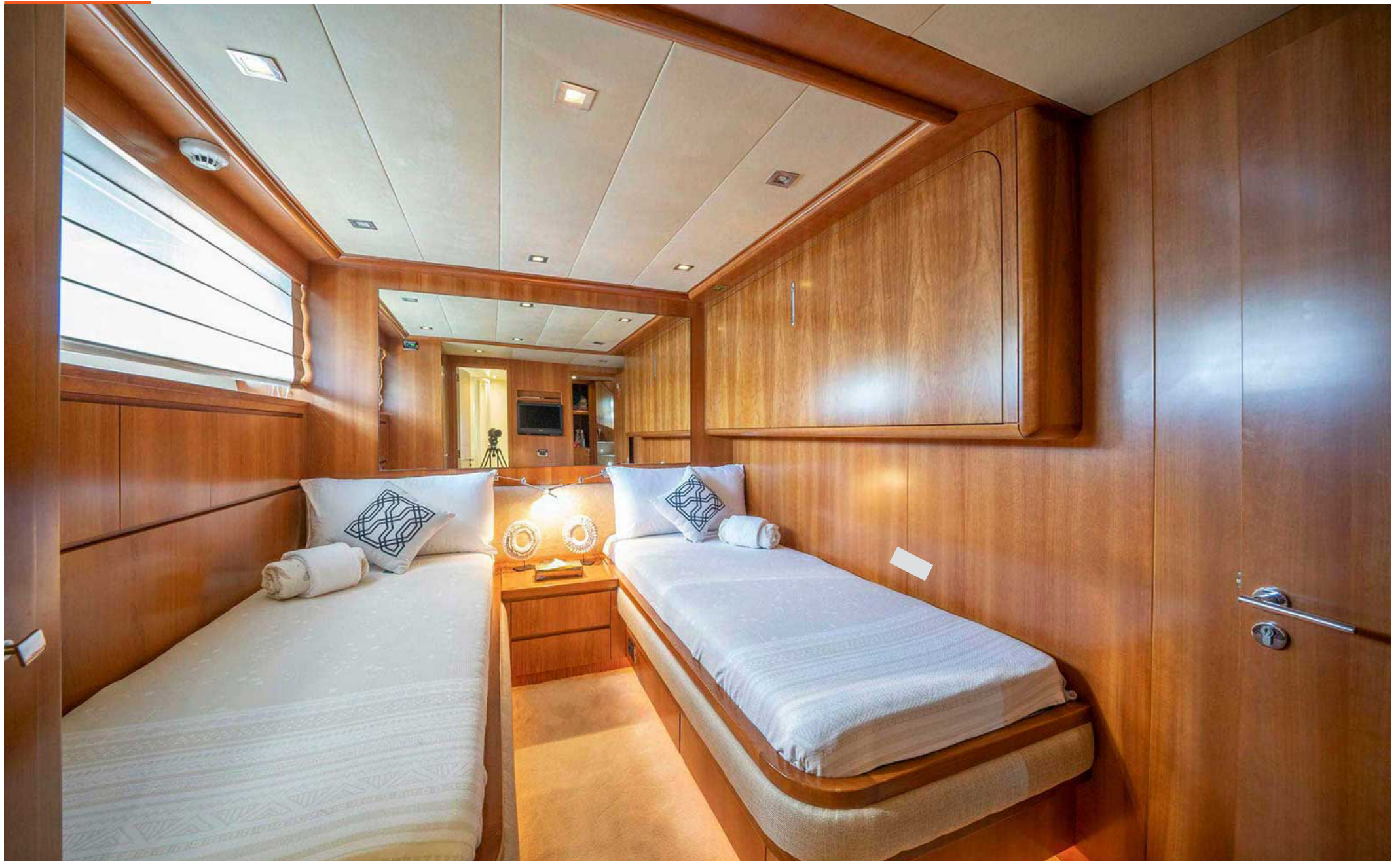
FALCON 115 | 35m | 2007

CABINS



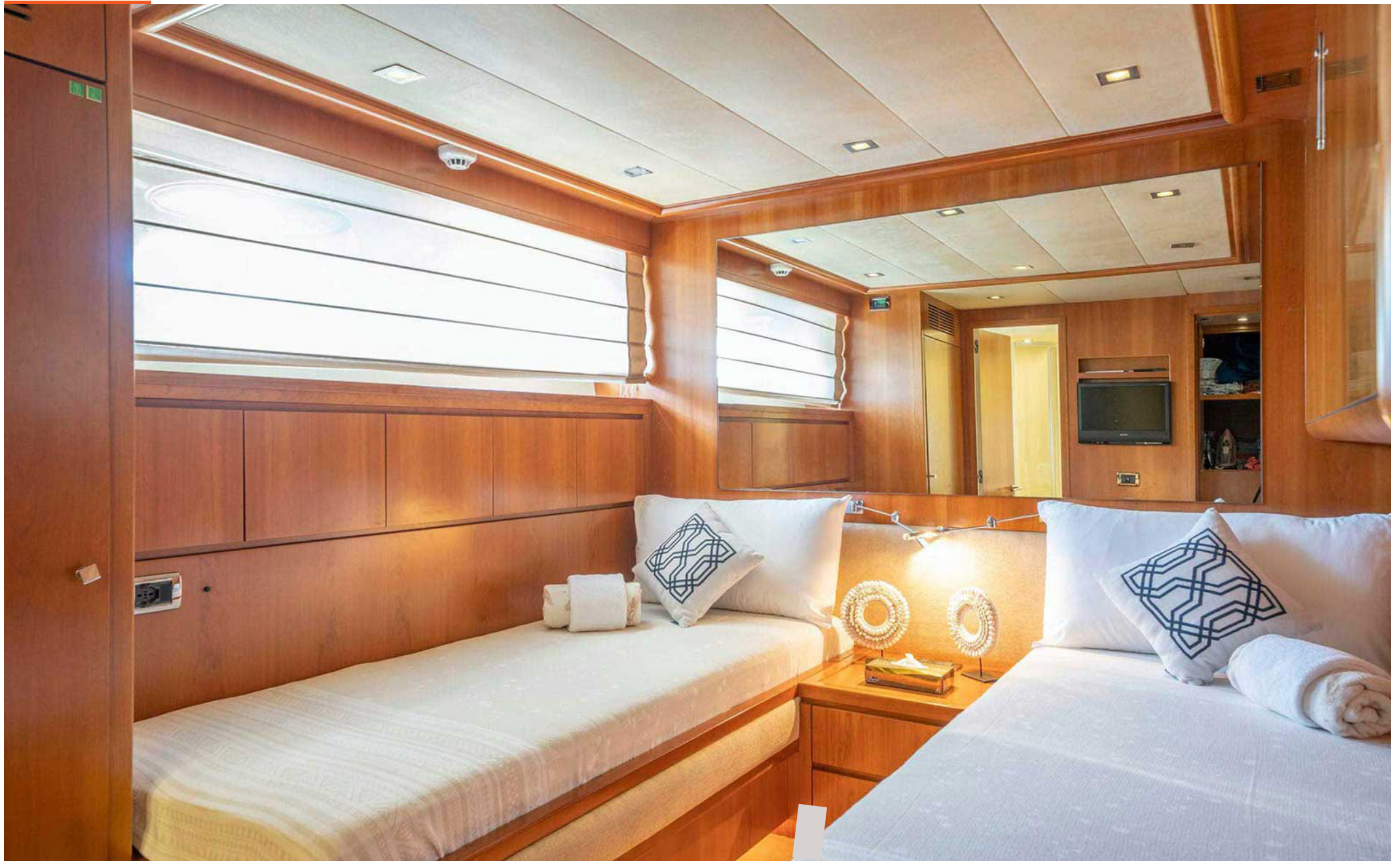
FALCON 115 | 35m | 2007

CABINS



FALCON 115 | 35m | 2007

CABINS



FALCON 115 | 35m | 2007

CABINS



FALCON 115 | 35m | 2007

CABINS



FALCON 115 | 35m | 2007

CABINS

FALCON 115

SPECIFICATIONS

OVERVIEW

Type: Motor Yacht
Model: Falcon 115
Year of Build: 2007

DIMENSION

Length: 35m
Beam: 6,8m

PERFORMANCE

Maximum Speed: 28 Knots
Cruising Speed: 16 Knots

ENGINE

2 x MTU 2500 HP
Generator 2 x 50Kwa

ACCOMODATION

Guests: 10
Cabins: 5 | 1 Master – 2 VIP – 2 Twin | WC + AC
Crew: 5 | 1 Captain | 1 Chef | 1 Deckhand | 1 Hostess

RECREATION

Tender Boat, Fishing Equipment, Mask Flippers,
Backgammon, Playing Cards



The yacht will be privately reserved for the guest(s) for the mentioned dates. The full payment of the total amount must be done for final confirmation for the yacht. Availability of the yacht and the stops on the route are subject to change and may be cancelled according to unexpected weather conditions on the tour date. A full day tour is between 10:00 - 17:00 (a total of 7 hours), unless agreed by prior arrangement with the hotel's guest. There will be no refund for cancellations 24 hours prior to tour date. 50% refund is applied for cancellations made before 24 hours prior to tour date. The Agency will not be liable for the accidents caused by clients. The price is inclusive of daily cruising fuel for the pre-agreed route and full crew service. The price is exclusive of cruising fuel for extra routes then the specified route, all foreign and private marinas, communications if any, crew gratuity, food & beverage expenses during the trip, entry & clearance fees for foreign waters, water sports and airport transfers. Food&Beverage can either be catered by the hotel or by the yacht and will be charged as an extra cost. In any case, this must be agreed at least 24 hours prior to tour date. In the case of a cancellation by the agency, the agency must provide a similar yacht and if no alternative is presented, the full refund will be made to hotel's guest. VAT is 18% as per governmental tax law. This offer is valid for one week.